

X82627-CS

DR-3141

RELEASE NO.

3

6 MAR 00

SAV

CHECK

6 MAR 00

CHECK

DLM

CATALOG LISTING
CSLA1EL
PAGE 1 OF 1

M

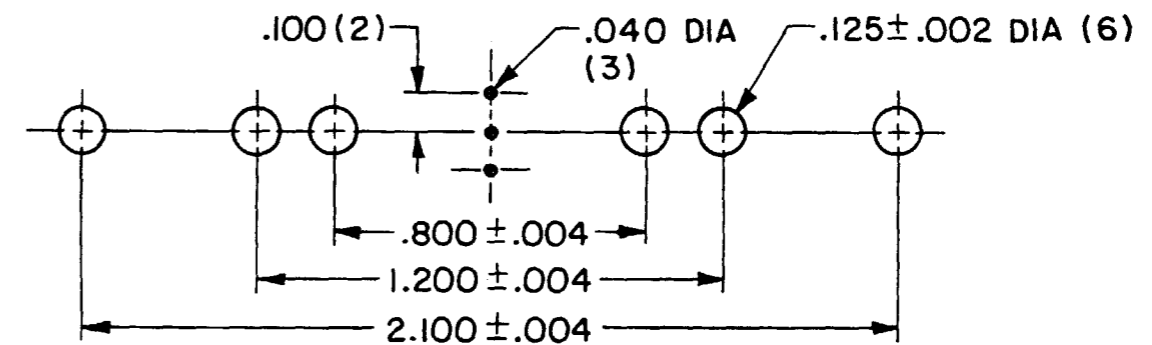
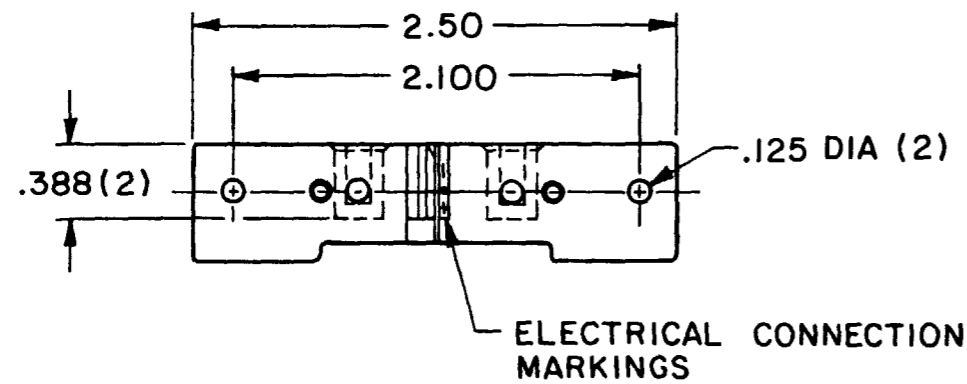
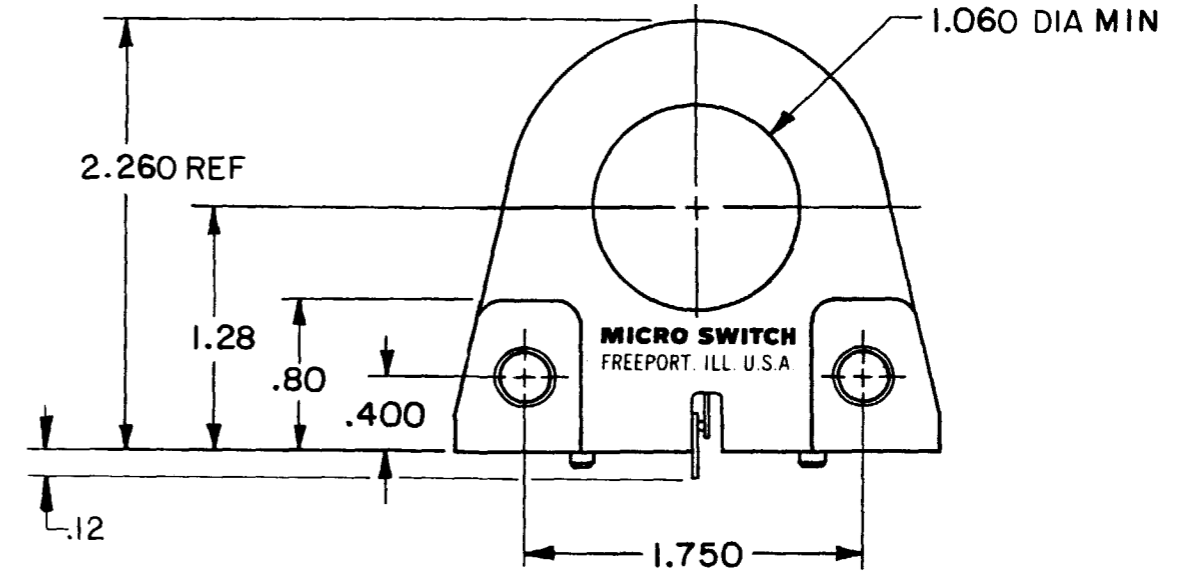
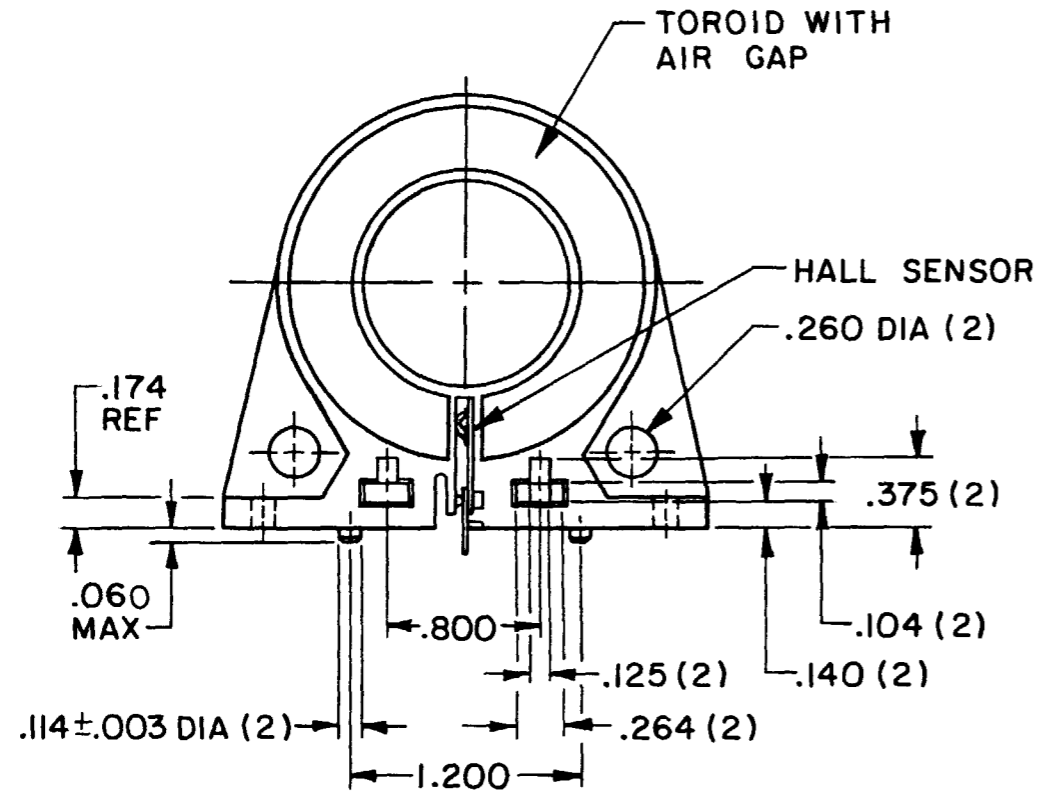
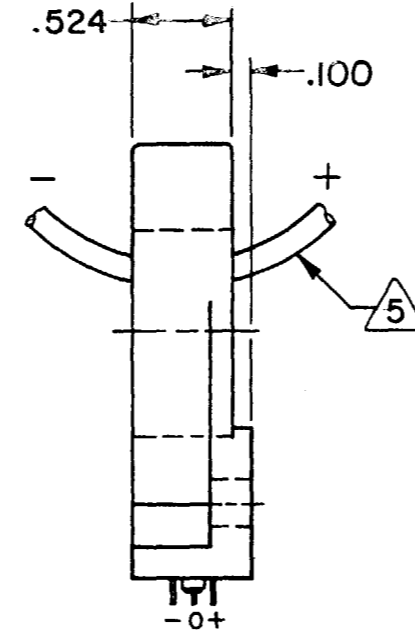
ISSUE

REVISIONS

A	CO-95704	DLM	6 MAR 00
---	----------	-----	----------

CHECK

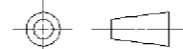
FORMTEK



SUGGESTED HOLE CENTERS
SCALE 2:1

THIS DRAWING COVERS A PROPRIETARY ITEM AND IS THE PROPERTY OF MICRO SWITCH, A DIVISION OF HONEYWELL. THIS DRAWING IS NOT TO BE COPIED OR USED WITHOUT THE APPROVAL OF MICRO SWITCH.

THIRD ANGLE PROJECTION



CHARACTERISTICS

ELECTRICAL DATA

SCALE FULL

- OPERATING FORCE
- DIFFERENTIAL FORCE
- RELEASE FORCE
- PRETRAVEL
- DIFFERENTIAL TRAVEL
- OVERTRAVEL
- FREE POSITION

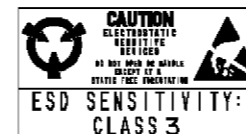
CONTACT ARRANGEMENT

DO NOT SCALE PRINT

UNLESS OTHERWISE SPECIFIED TOLERANCES ARE

- ONE PLACE (.0) ±.030
- TWO PLACE (.00) ±.015
- THREE PLACE (.000) ±.005
- ANGLES ±

WEIGHT



NOTES

- 1 - AIR GAP IN TOROID IS $.590 \pm .020$
- 2 - GAUSS LEVEL IN AIR GAP IS .59 TO .86 GAUSS PER N.I.
- 3 - RECOMMENDED P.C. BOARD MOUNTING IS 4-40 SQUARE NUT AND .375 LONG 4-40 SCREW
- 4 - SEE 91SS12-2 FOR ELECTRICAL CHARACTERISTICS
- 5 - CONVENTIONAL CURRENT FLOW IN DIRECTION INDICATED WILL CAUSE AN INCREASE IN HALL VOLTAGE